



Food/Beverage



Mining



Semiconductor



Oil/Gas



Manufacturing



Water/Wastewater



Power/Utility



EV Charging



**Winn-Marion
Companies**

ABB



Coriolis

Electromagnetic

Swirl/Vortex

Thermal Mass

Pressure

Gas Measurement/
Detection

Laser

Level



Drives

RTU/Flow Computers

Remote I/O

Switchgear

Control Systems

PLC

Valmet

(NELES | METSO | JAMESBURY | VALVCON)



Ball Valves

Butterfly

Segmented

Globe

Control

Electric Actuation

Pneumatic Actuation

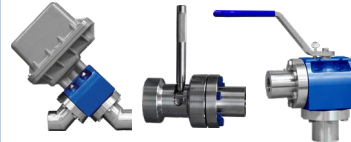
HABONIM
Industrial Valves & Actuators



Ball Valves

Compact Pneumatics

HYDROPLEX
High Pressure Pump and System Specialists



High-Pressure Throttle Valves

FREEWAVE



Edge Connectivity

Ethernet

Wireless I/O

electrolab



Tank Level

Level Switch

Wireless

SWI
SOLUTIONS WITH INNOVATION



Float

Gap

Capacitance

Level

Parker



Samplers/Heated Enclosures

Manifolds

Instrument Valves

RAJANT



Private Networks

Kinetic Mesh

THERMIN HEATING SYSTEMS



Heat/Steam Trace

Tubing

Monitoring

TLV



Steam Traps

Trap Testing

Separators

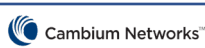
Manifolds

CONSPEC



Gas/Flame Detection

LEL Signaling



Winn-Marion Companies: 3805 Carson Ave. #16 Evans, CO 80620 | 970.339.9211 | evans@winn-marion.com



**Winn-Marion
Companies**



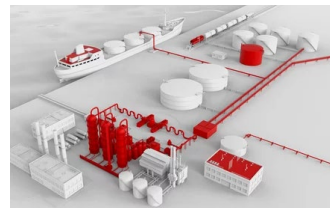
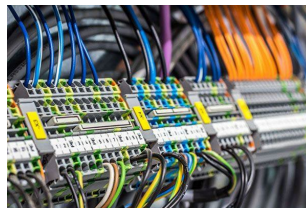
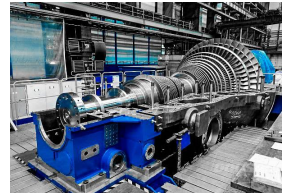
SERVICE

- Production Automation
- BTU Analysis
- Calibration
- Liquids Measurement
- Natural Gas Measurement & Control
- Radio & Fiber Communications
- Tank Level
- VFD Servicing



CONTROLS

- Analytical Shelters
- Chemical Injection
- Custom HMI
- Heat Trace Systems
- Plant Control Systems (DCS)
- PLC Integration
- Turbine & Engine Control



ELECTRIC VEHICLE (EV) CHARGING



**TURNKEY
INSTALLATION**

24/7/365 Direct Service Network
Future-proof Flexibility
Secure Cloud & Local Connectivity



Winn-Marion Companies: 3805 Carson Ave. #16 Evans, CO 80620 | 970.339.9211 | evans@winn-marion.com